

READING

Reportez vos réponses pour analyser votre performance.

Entraînez-vous dans les conditions d'examens.

prepmyfuture.com/book/30/ex/373



Question 1

OPENING HOURS

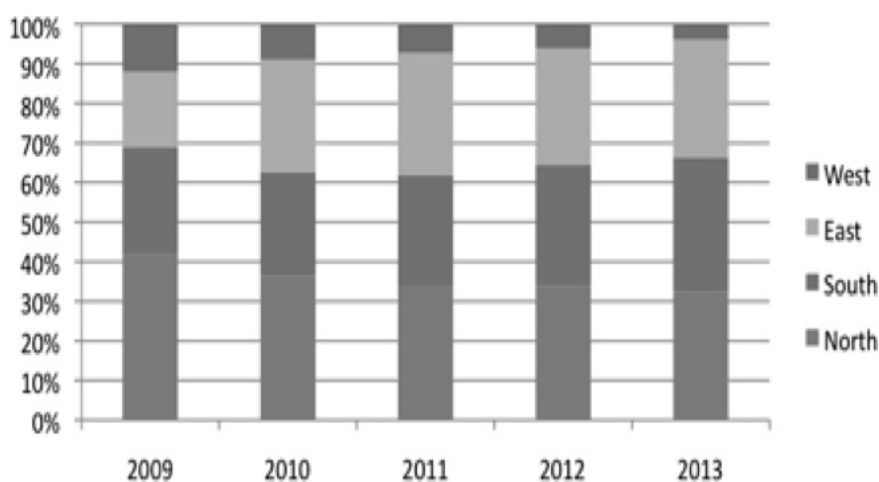
MON-FRI
9:00 AM – 6:00 PM

SAT
10:00 AM – 7:00 PM

- (A) The shop is open 7 days a week.
- (B) The shop closes later on weekdays.
- (C) The shop opens later on Saturday.

Question 2

Analysis of Total Sales by Division



- (A) Division South's sales greatly outweighed Division North's sales in 2013.
- (B) Division East's sales held steady over the 5-year period.
- (C) Division West's sales gradually shrunk over the 5 years.

Question 3

The HR department is now located _____ the 5th floor.

- (A) in
- (B) on
- (C) at
- (D) to

- Question 4 The property market has been _____ since 2015, thanks to a significant fall in interest rates the same year.
 - (A) climbing
 - (B) booming
 - (C) rising
 - (D) rocketing

- Question 5 In half an hour, the movie theater will be full. Everyone _____ the movie.
 - (A) will watch
 - (B) will be watching
 - (C) will have watched
 - (D) won't watch

Carspares SA was founded 50 years ago (6) _____ Spain by a young, entrepreneurial engineer. Its head office and research and development centre are (7) _____ just outside Madrid, but it (8) _____ subsidiaries in several Western European cities. The company produces and (9) _____ spare parts to the automotive industry, especially in France, Italy, Germany and the UK. 2 years ago, it acquired its UK rival, making it today one of the (10) _____ spare parts manufacturers in the world.

- Question 6 (6) _____
 - (A) at
 - (B) in
 - (C) to
 - (D) on

- Question 7 (7) _____
 - (A) placed
 - (B) positioned
 - (C) located
 - (D) held

- Question 8 (8) _____
 - (A) had
 - (B) have
 - (C) has
 - (D) got

- Question 9 (9) _____
 - (A) gives
 - (B) supplies
 - (C) sends
 - (D) takes

- Question 10 (10) _____
 - (A) longest
 - (B) shortest
 - (C) smallest
 - (D) biggest

The Eurostar is a (1) _____-speed train service that connects the UK to France and Belgium via the Channel Tunnel. It began operating trains to take passengers from one city centre to another in 1994. Initially (2) _____ departed from the UK at London Waterloo International station and in late 2007 they (3) _____ leaving from London's St. Pancras International station. Eurostar takes thousands of people a day (4) _____ Paris, Brussels, Lille, Calais and Disneyland Paris and is one of the most convenient ways of crossing the channel. Additional services include seasonal trains to the South of France in (5) _____ and the French and Swiss Alps in winter.

- Question 11 (1) _____
- Question 12 (2) _____
- Question 13 (3) _____
- Question 14 (4) _____
- Question 15 (5) _____

Taking common painkillers on a regular basis could increase the risk of a heart attack, according to new research.

Researchers from Canada, Finland and Germany looked at previous studies bringing together the data of almost 450,000 people, 61,460 of whom had suffered a heart attack.

They found that any dose of non-steroidal anti-inflammatory drugs (NSAIDs), including ibuprofen and naproxen, was associated with an increased risk.

Dr Mike Knapton, associate medical director at the British Heart Foundation, said: "This large-scale study worryingly highlights just how quickly you become at risk of having a heart attack after starting NSAIDs.

"Whether you are being prescribed painkillers like ibuprofen, or buying them over the counter, people must be made aware of the risk. Alternative medication should be considered where appropriate."

John Smith, chief executive of the Proprietary Association of Great Britain, which represents makers of over-the-counter medicine, said: "NSAIDs that are available to buy over the counter have much lower doses than those prescribed.

"Prescribed NSAIDs are also typically used daily and for much a longer duration, often to treat long-term conditions.

"People taking over-the-counter NSAIDs should not be concerned by this research if they are taking the medicine occasionally for short periods and according to the on-pack instructions."

The study is published in the British Medical Journal.

FROM: <http://news.sky.com/story/common-painkillers-may-increase-risk-of-heart-attack-10870862>

- Question 16 New research shows that the risk of a heart attack is increased if...
 - (A) you take painkillers from time to time.
 - (B) you often take painkillers.
 - (C) you never take painkillers.
 - (D) you very rarely take painkillers.
- Question 17 John Smith says people should not be concerned by the research...
 - (A) if they take over-the-counter NSAIDs from time to time for a short duration.
 - (B) if they take over-the-counter NSAIDs from time to time for a long duration.
 - (C) if they take prescribed NSAIDs regularly for a long duration.
 - (D) if they take prescribed NSAIDs from time to time for a long duration.

Company away day

If you have ever been forced to race your boss around an assault course, or pass a beach ball to a colleague without using your hands, then you have probably sampled the horror of a company away day.

Whether for team building, forward planning, or to raise money for charity, the thought of such organised days away from the office can make even the bravest shudder. And it is hard to know what is worse - being forced to do something wacky, or having to sit in the conference room of a dreary hotel for hours on end while your boss drones on about the year ahead. Thankfully for the sanity of middle managers everywhere, a new type of business away day is now increasingly on the menu - team-building cookery classes.

So instead of having to try to keep up with Tim from accounting on a space hopper, or build a raft with Karen from HR, an office team or department will make a meal together in a professional kitchen.

London-based Food@Work is one firm that organises such away days. Launched in 2002, it faced some tough trading in 2008 during the global financial crisis, but says business is now growing strongly again. Founder and owner Robinne Collie, 44, says there is not a "usual month" at the company, which charges from £125 per person. "Some months we do one very large event, like a charity event we ran for 500 participants, or we can run up to six smaller events with 12 to 40 participants. "I don't do more than six a month ever. I prefer four at most, because it's crazy busy."

A recent customer of Food@Work was UK building products group SIG, which sent along a team to cook a three-course meal of twice-baked cheese souffles, roulade of chicken in a Madeira jus, and apple tartlets with a salted caramel sauce. "It was a frantic few hours of fun in the kitchen," says Duncan Longson, SIG's European financial controller. "It was great to experience the atmosphere of a professional kitchen, and an excellent team-building exercise." Peter Hallard, SIG's group talent and development director, adds: "The heat of the professional kitchen and the stress of making a souffle stretched even the most seasoned of senior executives."

FROM : Lorelei Mihala, Business reporter, <http://www.bbc.com/news/business-39106150>

- **Question 18** How many reasons for having a company away day does the extract provide?
 - (A) 4
 - (B) 3
 - (C) 2
 - (D) 5

- **Question 19** How many events can the founder of Food@Work, Robinne Collie, organise in a month?
 - (A) More than 6 events a month
 - (B) 4 events at most a month
 - (C) Up to 3 events a month
 - (D) 6 events at most a month

■ LISTENING (AUDIO)



Reportez vos réponses pour analyser votre performance.



Entraînez-vous dans les conditions d'examens.



Écoutez les fichiers audio.

prepmfuture.com/book/30/ex/374



Hear the short passage. Then choose the right answer.

■ Question 1 When is the order now expected to be delivered to the customer's premises?

- (A) Tomorrow
- (B) Next Monday
- (C) Next Wednesday




Hear the short passage. Then choose the right answer.

■ Question 2 What does Jane say about her immersion course?

- (A) The trainers were speaking in English and not in Spanish at times.
- (B) Participants were speaking too much.
- (C) Course content is still not stimulating.

Hear the short passage. Then choose the right answer.

■ Question 3 Which is the boarding gate for passengers flying to Los Angeles?

- (A)  **GATE
15**
- (B)  **GATE
50**
- (C)  **GATE
54**

Hear the short passage. Then choose the right answer.

■ Question 4 How much did the woman spend ?

(A) **\$40**

(B) **\$50**

(C) **\$80**

Read ALL the questions. Click on the audio button to hear the long passage. Click on each question. Then choose the best answer.

■ Question 5 How many key reasons does Mark Peterson describe to explain the rise in the number of self-employed people?

(A) 3

(B) 4

(C) 2

■ Question 6 According to Mark, what is gratifying for some people and distressing for others?

(A) Seeking new employment

(B) Setting up a business

(C) Performing multiple tasks

■ LISTENING (SCRIPTS)

LISTENING SECTION DIRECTIONS

The Listening section measures your ability to understand conversations and lectures in English. You will hear a conversation or lecture only one time, and you will answer some questions about them. The questions typically ask about the main idea and supporting details of the conversation and lecture. Some questions will ask about a speaker's purpose or attitude. Answer the questions based on what the speakers state or imply.

You may take notes while you listen. You may use your notes to help you answer the questions. Your notes will not be scored.

In some question, you will see an audio icon. This means that you will hear, but not see, part of the question.



Reportez vos réponses pour analyser votre performance.



Entraînez-vous dans les conditions d'examens.



Écoutez les fichiers audio.

prepmfuture.com/book/30/ex/374



Hear the short passage. Then choose the right answer.

(WOMAN) This is a message about the delivery of office supplies ordered from us last Wednesday. Delivery was scheduled for tomorrow, but because of the general road haulage strike, the goods won't be shipped out of our warehouse until next Monday at the latest. Please remember to always allow a minimum of 48 hours for delivery. We're terribly sorry about this and hope it won't be too much of an inconvenience to you.

- **Question 1** When is the order now expected to be delivered to the customer's premises?
- (A) Tomorrow
 - (B) Next Monday
 - (C) Next Wednesday

Hear the short passage. Then choose the right answer.

(MAN) Hey Jane, you've just come back from another one-week business Spanish immersion course, haven't you? How did that one go?

(WOMAN) Well, the classroom activities were engaging for once and the group I found myself in wasn't too large, which meant participants had plenty of speaking time.

(MAN) I see, and how about the trainers? Proficient?

(WOMAN) The trainers didn't always speak in the target language, which they aren't meant to do of course. They were pretty competent from a pedagogical perspective though.

- **Question 2** What does Jane say about her immersion course?
- (A) The trainers were speaking in English and not in Spanish at times.
 - (B) Participants were speaking too much.
 - (C) Course content is still not stimulating.

Hear the short passage. Then choose the right answer.

This is the last call for passengers flying to Los Angeles on flight AA54. Immediate boarding at gate 15 for all passengers.

■ Question 3 Which is the boarding gate for passengers flying to Los Angeles?



Hear the short passage. Then choose the right answer.

(WOMAN) I'm looking for a swimming suit.

(MAN) Well, take a look at this one there from our new collection. It's 80 dollars.

(WOMAN) Hmm, It's nice but I didn't really want to spend more than 50.

(MAN) We have this other model on sales. There is a fifty percent discount. I can offer that at 40.

(WOMAN) That's perfect. I'll take it.

■ Question 4 How much did the woman spend ?

